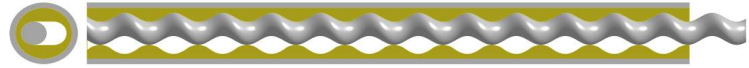




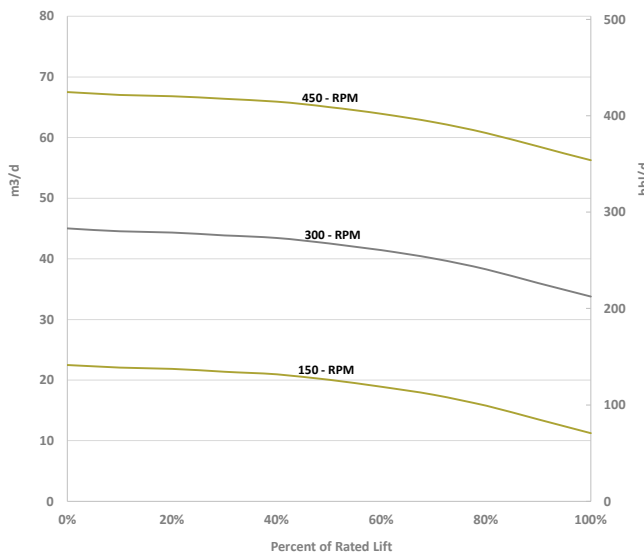
PUMP SPECIFICATION

015M - STD - FL

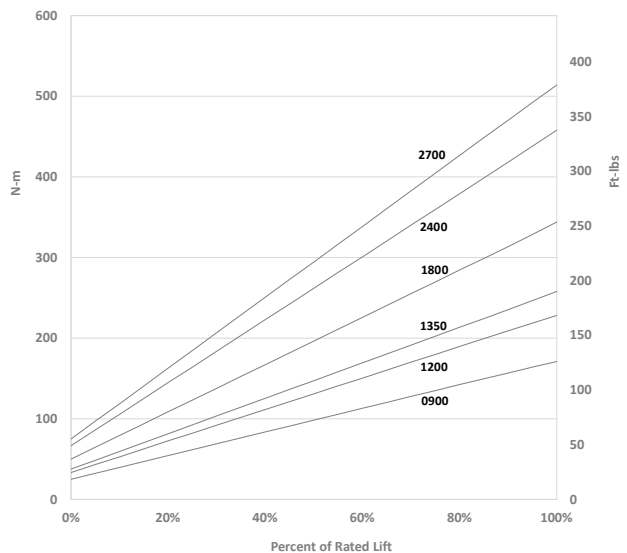


		15 m3 / Day / 100 RPM		(94 bbl / Day / 100 RPM)			
Available Models		015 M 0900	015 M 1200	015 M 1350	015 M 1800	015 M 2400	015 M 2700
		Geometry: Single Lobe		Operating Speed: 50 - 500 RPM		Free Gas Volume Fraction: 40% continuous	
Swept Rotor Angle: 35		Orbit Helix - mm (in): 60.00 (2.362)			Intake cavity area - mm ² (in ²): 884 (1.37)		
Pump Lift H ₂ O - m (ft)		900 (2952)	1200 (3936)	1350 (4428)	1800 (5904)	2400 (7872)	2700 (8856)
Rated Pressure kPa (psi)		9000 (1305)	12000 (1740)	13500 (1958)	18000 (2611)	24000 (3481)	27000 (3916)
Rated Torque N-m (ft-lbs)		171 (126)	228 (168)	258 (190)	344 (253)	458 (337)	514 (379)
ROTOR	Rotor Top Connection mm (in)	7/8" API Pin					
	Rotor Head Diameter mm (in)	41.30 (1.625)					
	Overall Rotor Length m (in)	2.62 (103)	3.34 (131)	3.68 (145)	4.73 (186)	6.13 (241)	6.85 (270)
	Weight kg (lbs)	17 (37)	23 (51)	26 (57)	34 (75)	45 (99)	68 (150)
Nominal Rotor Drift OD mm (in)		48.26 (1.900)					
STATOR - STD	Stator OD mm (in)	90.0 (3.54)					
	Collar OD (mm)	97.64 (3.844)					
	Connection Discharge - Intake	3 1/2" NUE Pin - 3 1/2" NUE Pin					
	Stator Overall Length w TB m (in)	2.57 (101)	3.29 (130)	3.63 (143)	4.69 (185)	6.08 (239)	6.80 (268)
	Weight kg (lbs)	40 (88)	54 (119)	60 (132)	80 (176)	106 (233)	120 (264)
	Distance TB to Elastomer mm (in)	300 (12)					
Tagbar/sub bottom connection		2 7/8" EUE Box					
STATOR - FL	Stator OD mm (in)	FL - 90 (3.54)					
	Collar OD mm (in)	FL - 90 (3.54)					
	Connection Discharge - Intake	2 7/8" EUE Box - 2 7/8" EUE Box					
	Stator Overall Length w TB m (in)	2.77 (109)	3.49 (137)	3.83 (151)	4.89 (192)	6.49 (247)	7.21 (276)
	Weight kg (lbs)	43 (95)	57 (125)	63 (139)	83 (183)	109 (240)	123 (271)
	Distance TB to Elastomer mm (in)	300 (12)					
Tagbar/sub bottom connection		2 7/8" EUE Pin					
NOTE							

Target in Well Flow Rates m³/d (bbl/d)



Target In Well Torque N-m (ft-lbs)



'CAUSE WE GIVE A \$#!T